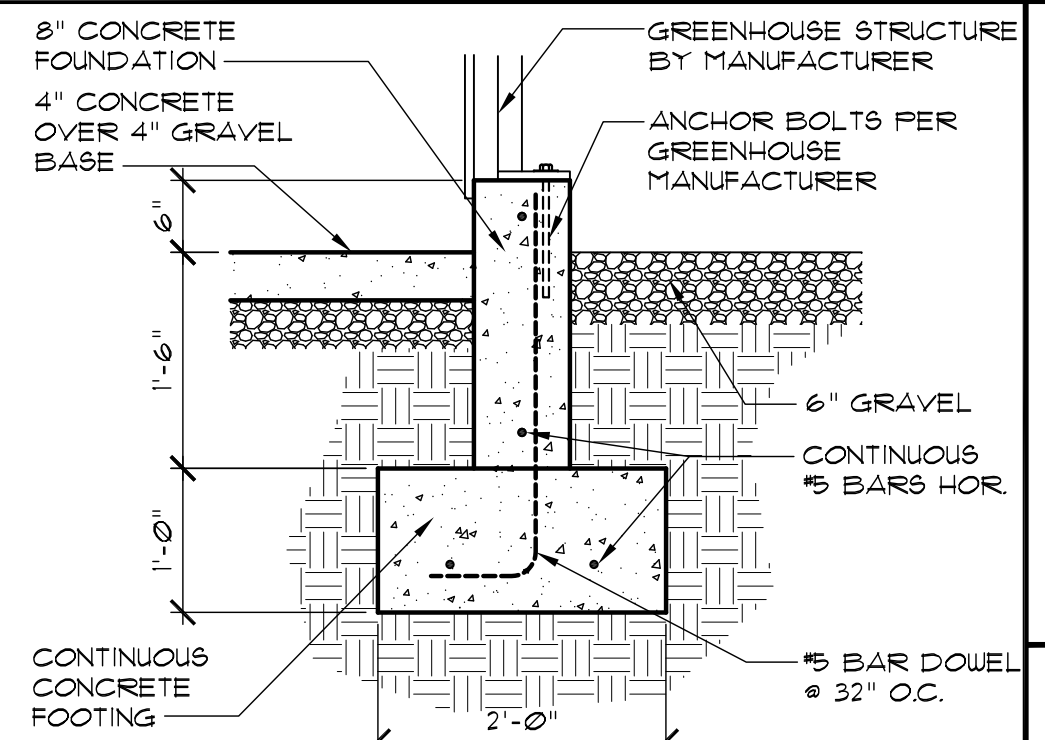
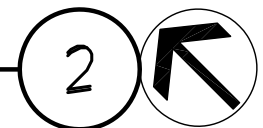
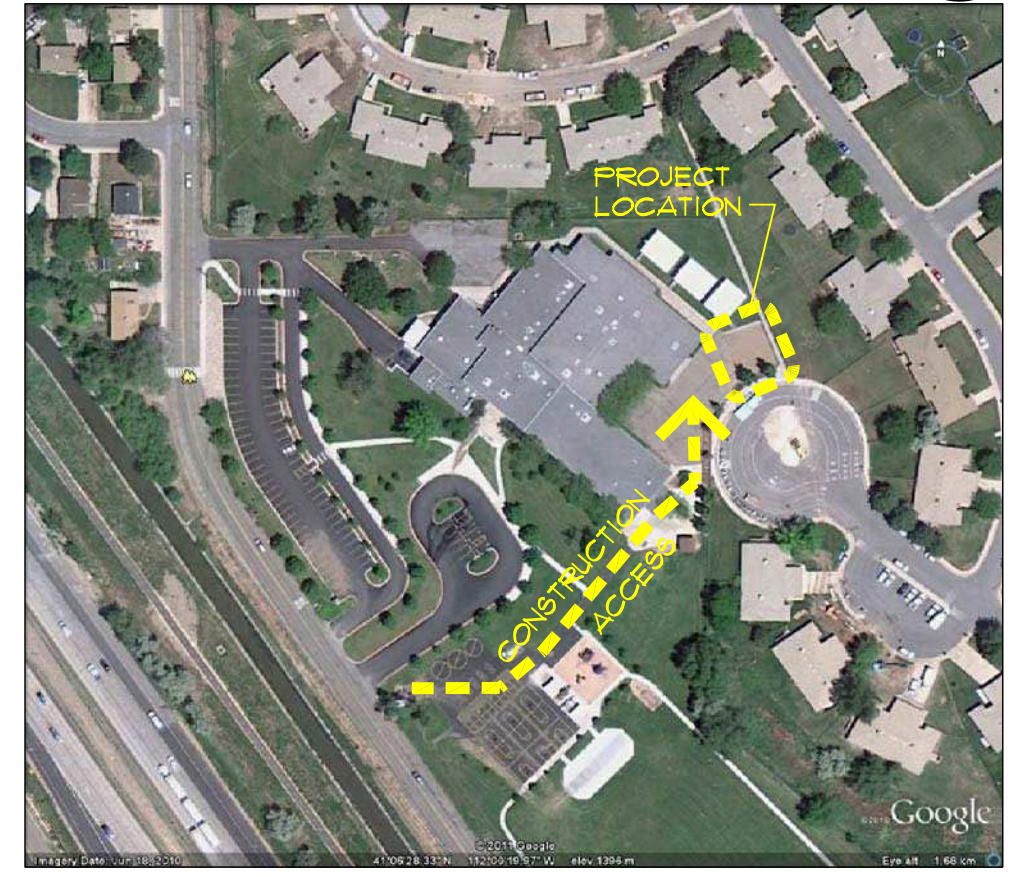


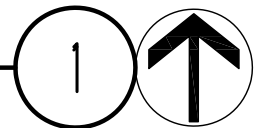
**SITE & UTILITY PLAN**  
 SCALE: 1" = 20'-0"



**FOUNDATION DETAIL 3**  
 SCALE: 3/4" = 1'-0"



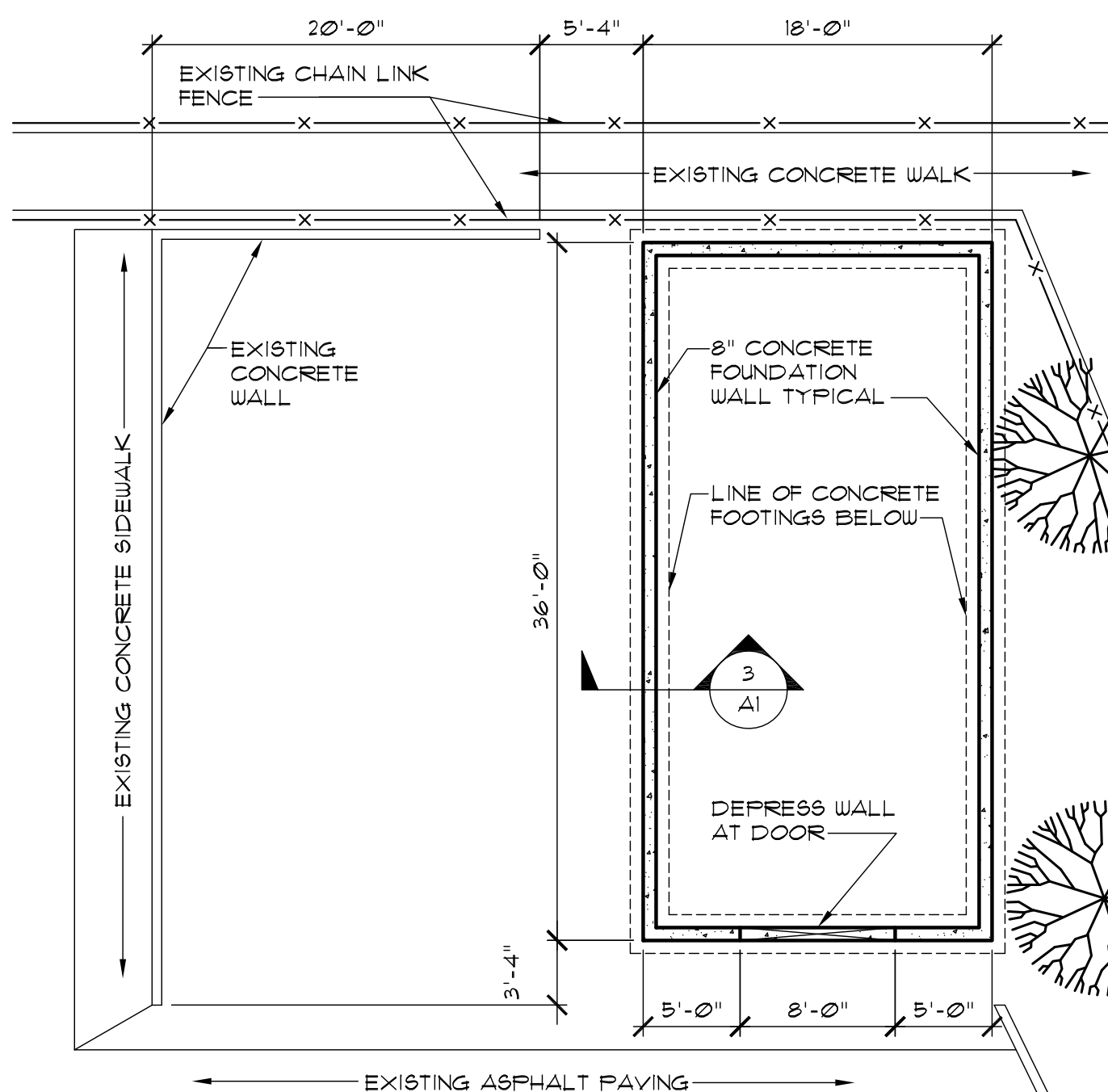
**VICINITY PLAN**  
 SCALE: NO SCALE



**New Greenhouse at**  
**Hill Field Elementary School**  
 389 South 1000 East, Clearfield

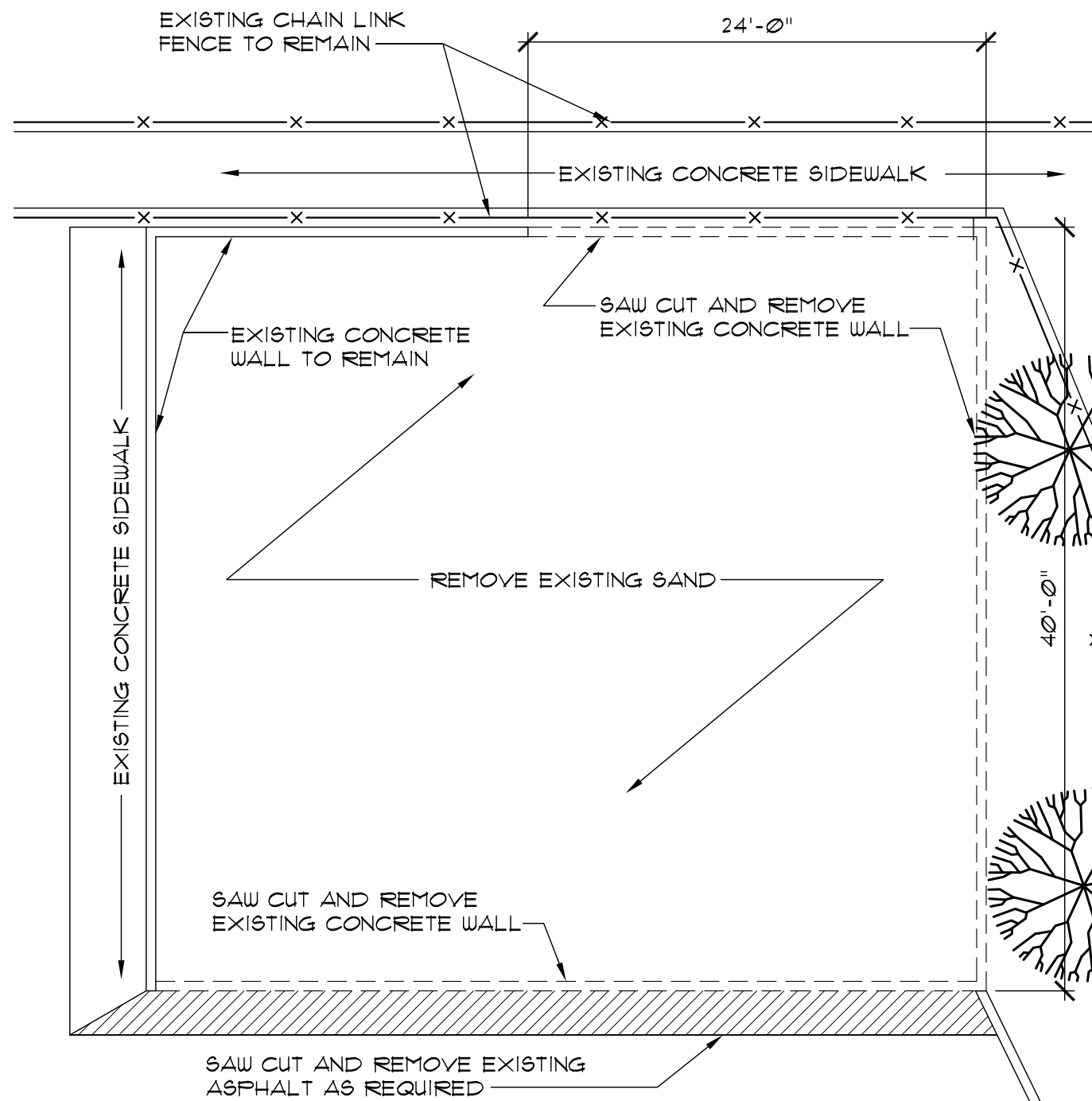
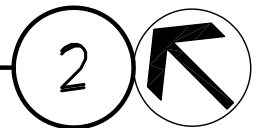
JuLY 15, 2011

**A1**



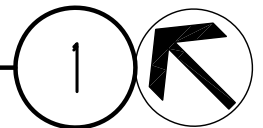
# FOUNDATION PLAN

SCALE: 1/8" = 1'-0"



# DEMOLITION PLAN

SCALE: 1/8" = 1'-0"



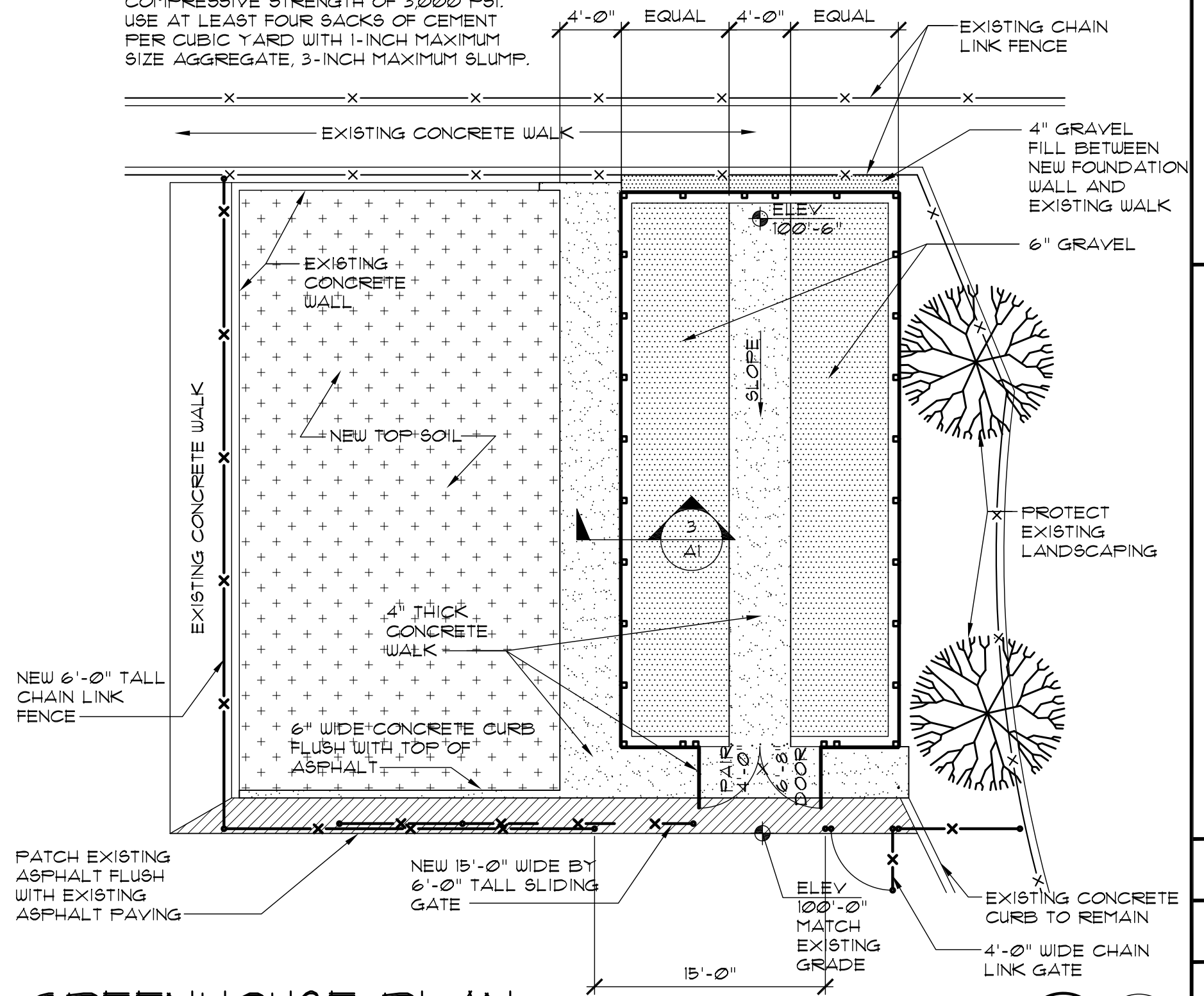
**New Greenhouse at**  
**Hill Field Elementary School**  
 389 South 1000 East, Clearfield

July 15, 2011

# A2

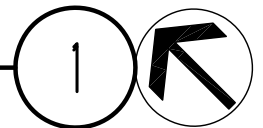


NOTE:  
 PROVIDE CONCRETE CONSISTING OF  
 PORTLAND CEMENT AS PER ASTM C 150,  
 AGGREGATES PER ASTM C 33, AND POTABLE  
 WATER. MIX MATERIALS TO OBTAIN  
 CONCRETE WITH A MINIMUM 28-DAY  
 COMPRESSIVE STRENGTH OF 3,000 PSI.  
 USE AT LEAST FOUR SACKS OF CEMENT  
 PER CUBIC YARD WITH 1-INCH MAXIMUM  
 SIZE AGGREGATE, 3-INCH MAXIMUM SLUMP.



# GREENHOUSE PLAN

SCALE: 1/8" = 1'-0"



**New Greenhouse at  
 Hill Field Elementary School**  
 389 South 1000 East, Clearfield

July 15, 2011

**A3**